



TECHNICAL FEATURES



ACCESS CONTROL MANAGEMENT SOFTWARE



KEYSCAN'S SYSTEM VII - REDEFINES ACCESS CONTROL

It is the most versatile access control management software in the security industry. Loaded with all the features and functions that the industry has come to expect from Keyscan. Packaged with Keyscan's renowned reliability to deliver an access control solution that you can depend on 365 days a year.

Whether protecting just a few doors or hundreds of doors, System VII packages ease of use with unprecedented integration and expansion capability.



Innovation has always been the cornerstone for Keyscan. Our dedicated and experienced hardware and software engineers have developed an access control solution founded on quality and reliability. Value is built into every feature and function of System VII, delivering an access solution that is guaranteed to meet end-user needs today and well into the future regardless of the size of the organization.

New York, Toronto, Tokyo and London, whether protecting a single site location or an organization with offices worldwide you can count on Keyscan to deliver world class access control.

SYSTEM VII - SOPHISTICATION WITHOUT COMPLICATION

System VII delivers all the features and functions expected in a premium access control solution but without the complication. Keyscan is known for developing feature rich access control management software that is logical, with ease of use considered for both the end-user and the installing technician.

Seasoned installers, novice users and corporate security directors all rave about the simple yet powerful Keyscan access control management software.

SINGLE PAGE INTERFACE

- System VII's Card holder screen provides the end-user with a single page interface for enrolling and assigning access levels. System VII delivers logically placed information for easy reference and entry.

SINGLE BUTTON HANDICAP FEATURE

- Address the concerns of individuals that may need more time to pass through doors. Simply click the single button handicap feature to apply the handicap timer.

CARD IMPORT FEATURE

- Import card holder information from an existing database or excel file and save on data entry. A CSV file formatted for Keyscan's data structure is all that is required to leverage this efficiency adding tool. Imports may be scheduled to update changes from a human resources database. Allowing end-users to simply manage one database.

LAST CARD TRANSACTIONS

- With System VII, open a card holder file and instantly view the card holders last transactions. A convenient tool to quickly determine if a card holder is in the facility, and where the credential was last used.

21 PERSONNEL FIELDS

- Users are provided 21 fields to record various personnel data such as first name, last name, department, parking spot and special comments. There are 10 completely user definable fields. All fields are searchable for report generation.

ACTIVE MAPPING (K-CM OPTION)

System VII provides a powerful active mapping software module. System VII's K-CM provides security personnel or system administrators with unprecedented tools to perform their jobs efficiently and effectively. The all new Active Mapping module provides visual representation of active sites, with building floor layouts, and annunciates, real-time on screen, door status, alarm points and input status. Camera locations can also be identified on the map with active camera icons providing an instantaneous link to the live camera feed for that building location and camera. Power users of the active mapping module will appreciate the multi-map capability with map linking ability.

- Call up live video straight from the Active map
- Visual alarm point notification
- View on-file photo identification for any entry point
- Manually lock or un-lock doors
- Arm or disarm inputs
- Multi-map linking functionality





SYSTEM VII - INNOVATION. UNCOMPROMISED.

- **SQL Server 2005 Express Database**

System VII provides the latest in database technology behind the Keyscan access control system. 4GB of database storage provides ample historical information for all but the largest installations.

- **Scheduled Database Backups with Email Notification**

Automate database backups with System VII. Configure the day(s) and time for backups to occur and benefit from System VII generated email notifications.

- **2 Levels of Disaster Recovery**

Level I – Recover the Keyscan access control database quickly and efficiently by restoring from a previous database backup.
Level II – Rebuild the Keyscan database by downloading data from the systems access control units.

- **Multi-Monitor Support**

Build impressive building or corporate wide monitoring stations with System VII.

- **Multi-Communication Managers**

Optimize system wide communication speed and performance by running multiple communications managers on a single computer or server. Large sites with many controlled doors will benefit from faster ACU polling times.

- **PC or Server Failures**

Keyscan's access control solution delivers full independent operation without degradation in the event of access control PC or server failure.

- **User Screen Layout Preference**

System VII is designed to recall the user's last screen and access control windows configuration. Whether it is single monitor or multiple monitor get the look and orientation that suits the task.



THE ENTERPRISE SOLUTION

SYSTEM VII – OPTIONAL FULL MICROSOFT SQL DATABASE

Keyscan has designed full SQL capability into the System VII access control management software. Ready when needed, System VII is equipped to support the largest corporate enterprise utilizing the latest in full SQL. Whether the corporation is running Microsoft SQL Workgroup, Standard or Enterprise, System VII has the database upgrade.

SYSTEM WIDE COMMUNICATION - RUNNING AS A SERVICE

System VII by default runs PC to panel communications as an application. For those organizations that require a true server based environment, System VII allows for communications to be installed as a service.

FACILITY LOCK DOWN

Protecting assets and people is serious business. The instant security is breached, institute a facility-wide lock down from any System VII client or reader.

FIRST PERSON IN

Utilize this feature to enforce supervisor or management presence on site before triggering a timezone. Ideal to ensure site protection for unscheduled closures, holidays or to enforce local health and safety requirements.

PRESENT 3

This reader based function allows authorized personnel to toggle timezones, lock & unlock doors for un-scheduled or temporary access or to arm or disarm various alarm inputs such as motion detectors etc.

UNLIMITED NUMBER OF SITES PER DATABASE

Separate sites may be created within the System VII database creating isolation between different sites, buildings, locations, tenants or customers. Login permissions are assigned to System VII software users/administrators allowing them access to individual or multiple sites based on their privileges. Permits management of multiple sites/tenants/customers from a central location or central station. Each site is capable of supporting 32,000 card holders.

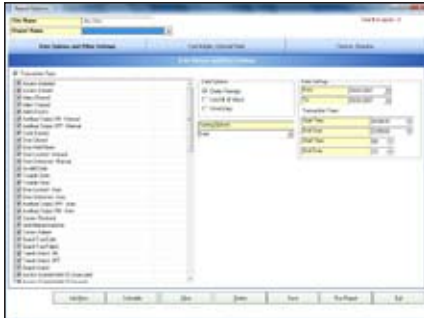
UNLIMITED NUMBER OF PANELS AND READERS PER SYSTEM

System expansion is designed into every Keyscan panel.



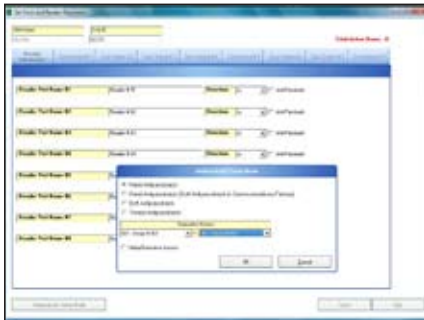


KEYSCAN - UNMATCHED DEPENDABILITY & EXPANSION



MANAGEMENT AND TRANSACTION REPORTS

- Point and click error proof report generation on virtually any and all site activity
- Specify the day and time for the desired report and let System VII take care of the rest.
- Auto email important management reports with no user intervention required.
- Save frequently used report templates
- Ideal for statistical analysis or activity investigations.



ANTI-PASSBACK

- Prevent security loopholes by implementing card Anti-Passback (APB)
- User selectable APB modes to suit a range of security levels
- Executive access provisions exempt specified groups from the APB restrictions

IOCB1616

- Integrate additional security and building components into the access control system with 16 inputs and 16 outputs per IOCB1616.
- Connect up to four IOCB1616 circuit boards per access control unit.
- Assign multiple input devices such as motion detectors, push buttons, or other sensing devices
- Trigger outputs such as CCTV cameras, alarms, lights, HVAC and other systems
- Schedule activation and de-activation of selected inputs or outputs

(IOCB1616 not supported on CA200)



KEYSCAN'S ACCESS CONTROL UNITS ACCEPT A WIDE VARIETY OF READERS AND READER TECHNOLOGIES.

K-PROX2: accepts all 125 kHz HID cards and key fobs and is fully licensed by HID.

K-VAN: Vandal proof, bullet resistant 125kHz proximity reader, fully licensed by HID.

K-KPR: Combination keypad and 125kHz proximity reader, fully licensed by HID.

HID iClass: These 13.56 MHz smartcards and readers offer built-in encryption to deliver high security and integrity with the convenience of proximity. In addition to the access control application customers have the ability to use additional application areas on the card for other functions, such as cashless vending etc..

INDALA: Indala's 125 kHz proximity readers offer good security with very high reliability and longevity in all environments, including harsh outdoor environments.

HID 125 KHZ PROX SERIES: These are widely available in a variety of bit structures, and are competitively priced.

RF TRANSMITTERS: KEYSCAN's two button and four button transmitters provide excellent convenience combined with security for parking applications. KEYSCAN builds in additional proximity functionality, so that when the driver leaves the vehicle the transmitter fob functions as a prox card on all regular indoor readers. Available in HID and Indala's 125 kHz versions.

BIOMETRIC: there is a wide range of biometric devices available in today's ever-changing marketplace. Whether it's iris, hand or fingerprint, etc. – Keyscan is ready to deliver the highest in security. Keyscan accepts all Biometric readers supporting the industry standard 26 bit Wiegand protocol.

SYSTEM VII SOFTWARE MODULES

K-BADGE - PHOTO BADGING MODULE

System VII Photo Badging Module adds an extra layer of security. This dual purpose optional Module verifies cardholder identities with on-file images and conveniently integrates photobadging within the access control system.

K-WEB -SYSTEM VII WEB ACCESS

System VII's K-WEB optional module provides the anytime, anywhere power of the internet to Keyscan's access control solution. This highly refined module creates a secured WEB page application to manage the Keyscan system in a truly remote environment. Manage a single site or multiple sites anywhere on the globe, WEB connectivity is all that is required. As with every Keyscan system, panels remain entirely isolated from the internet for true system integrity and security. Additionally, in the event of a WEB or network failure Keyscan panels remain fully operational with no degradation of security. Keyscan innovation at work!

Password login authentication

- Login name and password authentication provides enhanced K-WEB portal security
- Assignable login privileges and permissions

Card holder management

- Includes card additions, card archiving/deleting, access privileges adjustments

Report generation

- Create and run custom reports with the full suite of System VII reporting options

System Status

- Open/lock/pulse doors
- Review door status including generated door alarms.

++Refer to K-WEB installation guide for required system installation and configuration requirements.



K-WEB Card Holder Edit Screen



PHOTO VERIFICATION

- Trigger card holder images to appear on-screen upon card presentation
- Compare onscreen photo to actual cardholder
- Ideal for monitoring main access points where security is critical

PHOTO BADGE EDITOR

- Create corporate badges
- Import Logos and backgrounds
- Define printable fields that reference the System VII database such as first name, last name, department and much more.
- Supports and prints industry standard barcode types
- Print ISO card badges with the Evolis Pebble or Dualys printer



VB-P408

Single sided card printing



VB-P408DBL

Double sided card printing





SYSTEM VII - INTEGRATION SIMPLIFIED

K-TV – CCTV INTEGRATION MODULE

This software module provides the ultimate in integrated security. The incredibly user friendly System VII interface allows for seamless integration with access control and the CCTV platform. Whether the CCTV Platform is RS232, Web-enabled or DVR driven, System VII delivers purpose and function in one clean interface.

Alarm Video Retrieval - Click on an alarm event and immediately view the applicable video. Respond to Alarm events knowing what awaits you.

Live Video Feed - Run the live video feeds directly from System VII. Monitor the ongoing site activity at a glance. With the enhanced Multi-monitor functionality, have live video running on one monitor and the System VII running on another to deliver a true organization command centre.

Historical Video Retrieval - System VII allows you to call up old alarm events and instantly view the associated historical video. Search video by date and time. Simply select the camera and go.

Camera Alarm Presets - Alarm points can be set to trigger the System VII CCTV screen and force the closest camera to the alarm point using defined PTZ presets. Allowing instant viewing of an alarm point without requiring the operator to manually input PTZ commands.

PTZ Control - While viewing live video the operator can choose to manually adjust the PTZ controls within the System VII access control management software. One Application – Total Control.

Multiple CCTV screens - Monitoring multiple cameras or possibly multiple DVRs is no problem for System VII's CCTV integration module. Enjoy the ability to view multiple System VII CCTV screens open simultaneously.



SUPPORTED DVR'S

ATV (Falcon), Bosch (DiVAR), Capture (CPT-IDR4816), Dedicated Micros (Net Vu), GE Security (DVSe, SDVR, DVMRe), General Solutions, Honeywell (Fusion), Open Eye (DVR x series, DVR Xr Series), Pelco (DX8000, DX8100) and Toshiba (Surveillix) digital video recorders. This list is subject to change without notice as DVR manufacturers may alter specifications. Contact Keyscan to ensure availability of current DVR driver.

K-VIS - VISITOR MANAGEMENT

Keyscan's optional System VII Visitor Module has a full range of automation features for registering and monitoring visitors.

- Schedule visits, track visitor status
- Retain historical records of visitors
- Built in email notification upon visitor arrival
- Interfaces with Keyscan's business card scanner (p/n BIZSCAN)
- Imports contact info directly from MS Outlook™
- Assigns visitor access rights



KEYSCAN ACCESS CONTROL UNITS

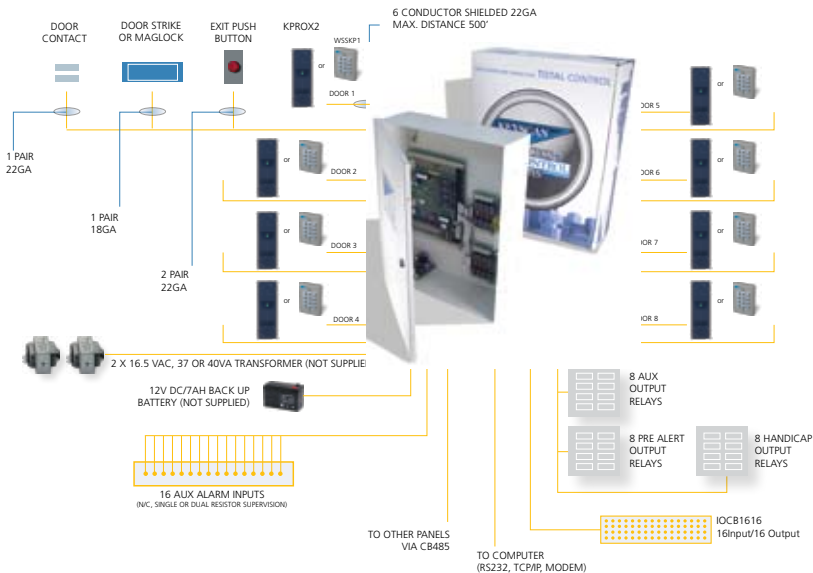
CONTROL UNIT FEATURES

- Stores up to 32,000 cards per site with no limit on number of sites
- Create up to 511 door groups and 511 elevator groups
- Retains last 6000 transactions in activity memory buffer
- Create up to 256 time zones, 512 different schedules, and 3 different holiday types
- Create up to 64 holiday dates
- Monitors door forced open and door held open alarm conditions at reader-controlled doors
- Monitors temporary cards with programmable date activation/expiration and/or usage countdown
- Door contact, RTE, and aux inputs with single or dual resistor supervision
- Unlimited remote sites via TCP/IP or dial-up modem
- Heavy-duty 10 amp relays for long life and reliability
- Large, well constructed enclosure with ample room for wiring and circuit boards
- Dual processors for enhanced system performance - panels operate during uploading and downloading of data
- Removable terminal blocks for easier installation and service
- Individual reader terminal blocks
- Mix or match access control units for optimum installation
- Simple jumper settings for most Wiegand protocols
- Programs daylight savings and standard time to change automatically
- 2 year warranty



2, 4 AND 8 DOOR ACCESS CONTROL UNITS

Mix and match Keyscan's line-up of access control units to optimize system design and improved system installation. From a 2 door to a 200 plus door system Keyscan Access control is designed for total scalability, flexibility and reliability!



| CA 200 Access Control Unit | CA 4000 Access Control Unit | CA 8000 Access Control Unit | EC1000/2000 Elevator Control Unit |
|-----------------------------------|--|--|--|
| 2 Readers or Keypads | 4 Readers or Keypads | 8 Readers or Keypads | 1 Elevator cab up to 40 floors (EC1000) |
| 8 Alarm inputs (supervised) | 16 Alarm inputs (supervised) | 16 Alarm inputs (supervised) | 2 Elevator cabs up to 16 floors each (EC2000) |
| 2 time-programmable outputs | 8 time-programmable outputs | 8 time-programmable outputs | 2 readers or keypads for dual elevator systems |
| | Up to 64 programmable supervised inputs | Up to 64 programmable supervised inputs | Permits cardholder access to single or multiple floors |
| | Up to 64 programmable supervised outputs | Up to 64 programmable supervised outputs | *for additional floor control add OCB8's |
| Built-in power supply for Readers | Built-in power supply for Readers | Built-in power supply for Readers | Built-in power supply for Readers |

COMPREHENSIVE FACTORY TRAINING AND WEBINARS

Keyscan offers comprehensive factory training courses and product exclusive webinars. Visit www.keyscaan.ca for specific factory training and webinar dates.



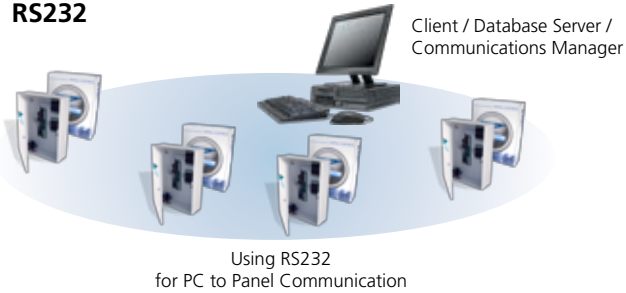


SYSTEM VII - SCALABILITY, RELIABILITY, FLEXIBILITY.

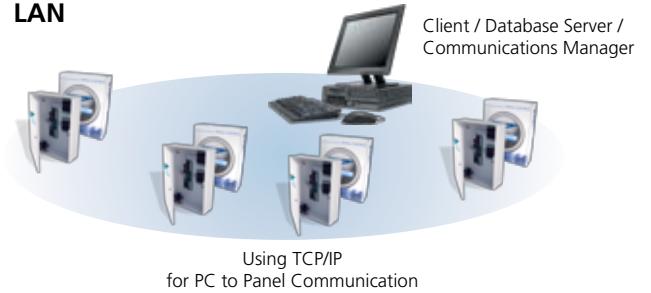
Whether installing a base Keyscan System or an enterprise wide access control solution with hundreds of doors and multiple buildings or sites, Keyscan has the solution. Limitless expansion, based on a flexible panel communications platform delivers reliable, consistent performance. In the event of a network failure, rest assured that every Keyscan access control panel has the ability to run independently with no performance degradation or security compromises.

BASE KEYSKAN CONFIGURATION

RS232

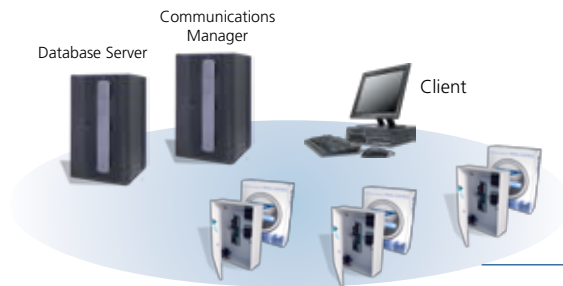


LAN

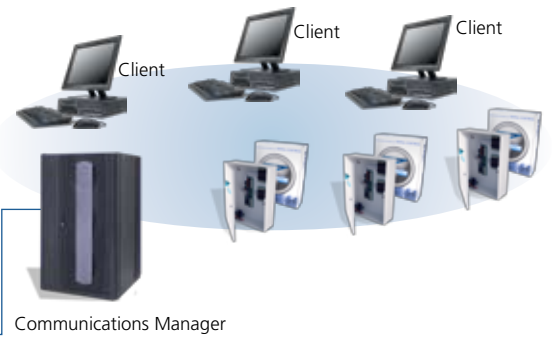


ENTERPRISE KEYSKAN CONFIGURATION

CORPORATE HEAD OFFICE - CHICAGO



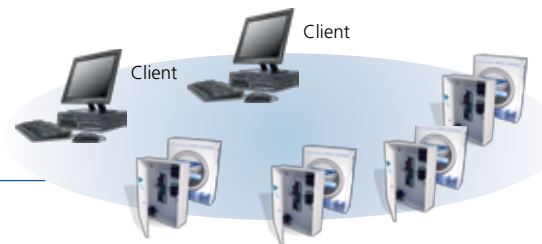
BUILDING 2 - LONDON



BUILDING 3 - NEW YORK



BUILDING "N" - TOKYO



DESIGN HELP

Knowledgeable staff are always ready to assist in the most involved system design.

COMMUNICATION OPTIONS

READER TO ACU

- Reader – 22 AWG 3 pair shielded: maximum 500 feet (152 m)
- Door Lock – 18 AWG 1 pair: maximum 500 feet (152 m) *
- Door Contact – 22 AWG 1 pair: maximum 1000 feet (304.8 m) *
- Request to Exit (RTE) – 22 AWG 3 pair: maximum 1000 feet (304.8) *

Optional communication extenders

*WIEEX extends distance by 4000' on twisted pair

*CWIEEX extends distance by 500' on Coax cable

ACU TO ACU

Option A - CB485

Parallel -22AWG / 4 conductor (CAT5) @ 56K baud: maximum 2000 feet (609m) between ACUs

Option B - CPB-10

Parallel or star – 22 AWG / 4 conductor shielded @19,200 baud: maximum 2000 feet (609 m)

ACU TO PC OPTIONS

1. Serial RS-232 – 22 AWG / 5 conductor shielded: maximum 100 feet (30.5 m)
2. Commex, RS-485, – 22 AWG 2 pair twisted CAT5: maximum 4000 feet (1219.2 m)
3. LAN/WAN (TCP/IP) NETCOM 2 or NETCOM 6 (encrypted)
4. Dial-up Modem
5. USB-SER – RS232/RS485 to USB Adaptor

OPERATING SYSTEMS

Microsoft Vista™ Business™, Windows 2000™, Windows 2000 Server™, XP Professional™, Windows 2003 Server™

++Consult Keyscan for Microsoft Vista Business service pack compatibility level.

PC SPECIFICATIONS

Faster processors and higher RAM provide better system performance. For large multi-site systems, please contact Keyscan for proper PC requirements. The following outlines minimum system requirements:

- Central Processor Unit: Pentium D or later*
- RAM: 1GB or greater
- Hard Disk: 20GB available space or greater
- USB Port for photo badging and signature capture
- Com Port: 1 required if direct connect to control units, 2 required if using CCTV control
- CD-ROM or DVD Drive (reader/writer)
- Mouse or compatible pointing device
- Network Interface card (NIC) with TCP/IP protocol and a valid, active, static IP Address
- Graphic Card supporting 1024x768 or higher screen resolution
- Microsoft Internet Explorer 6.0 SP1 or later

*Celeron Processors are not recommended

CONTROL UNIT TECHNICAL SPECIFICATIONS

OPERATING VOLTAGES

Input transformers: 16 VAC, 37-40 VA Class II

Internal Power Supply: 13.5 VDC @ 1.2 amps

Battery Backup: 12VDC 7 Amp/Hr.

OPERATING ENVIRONMENT

32° to 120° F. 0° to 49° C., Humidity: 0% to 90% R.H., non-condensing

RELAY OUTPUTS

Form C contacts, 10 Amps Max. 24 VAC or 32 VDC

COMMUNICATIONS

RS485 with CB-485

Dial-up with CB-485M

TCP/IP with NETCOM2 or CB485 with NETCOM2P

EIA/TIA 562 with CPB-10

ENCLOSURE

Single locking box CEMA / NEMA Type 1

Dimensions: 20 1/4" (51.4cm) H x 16 3/8" (41.6cm) W

x 5 5/8" (14.3cm) D

Net Weight: 15.8 lbs (7.2kg)

READER TECHNOLOGIES

- Proximity
- Contactless Smart Card
- iClass
- Radio Frequency (wireless parking applications)
- Biometrics
- Bar Code
- Mag Stripe

ORDERING OPTIONS

SYSTEM VII

- Premium access control management Software complete with 2 concurrent clients

K-BADGE

- Photo badging & Verification license

K-TV

- CCTV module license to enable CCTV & Video control

K-CL

- Client license for one additional concurrent user

K-VIS

- Visitor management module for integration with System VII access control management software

K-CM

- Security Command module license

K-WEB

- System VII WEB Access internet based system management module

*Refer to K-WEB installation guide for installation and configuration requirements.



ACCESS CONTROL MANAGEMENT SOFTWARE

OVERVIEW OF THE FEATURES IN EVERY KEYSKAN SYSTEM

| PANEL NAME | CA 200 | CA 4000 | CA 8000 | EC 1000 | EC 2000 |
|---|--------|---------|---------|-----------|-----------|
| DOOR OUTPUT RELAYS | 2 | 4 | 8 | NA | NA |
| CARDS | 32000 | 32000 | 32000 | 32000 | 32000 |
| TRANSACTION FILE BUFFER | 6000 | 6000 | 6000 | 6000 | 6000 |
| TIME ZONES | 256 | 256 | 256 | 256 | 256 |
| TIME SCHEDULES | 512 | 512 | 512 | 512 | 512 |
| GROUP LEVELS | 511 | 511 | 511 | 511 | 511 |
| HOLIDAY DATES | 64 | 64 | 64 | 64 | 64 |
| VISITOR CARD | YES | YES | YES | YES | YES |
| READERS | 2 | 4 | 8 | 1 | 2 |
| KEYPADS | 2 | 4 | 8 | 1 | 2 |
| READER DOOR INPUTS (Supervised) | 2 | 4 | 8 | NA | NA |
| EXIT BUTTON INPUTS (Supervised) | 2 | 4 | 8 | NA | NA |
| ALARM OUTPUT RELAYS | 2 | 4 | 8 | NA | NA |
| AUXILIARY INPUTS (Supervised) | 8 | 16 | 16 | NA | NA |
| SUPERVISED INPUTS (OPTIONAL) | NA | 64 | 64 | NA | NA |
| IOCB 1616 SUPERVISED INPUT/OUTPUTS (Optional) | NA | 16-64 | 16-64 | NA | NA |
| POWER FAIL OUTPUT | YES | YES | YES | NA | NA |
| ELEVATOR CONTROL | NA | NA | NA | 1x40 Flrs | 2x16 Flrs |
| FLOOR MONITOR INPUTS (Supervised) | NA | NA | NA | YES | YES |
| CONTROL PROCESSORS | 2 | 2 | 2 | 2 | 2 |
| MANUAL RELAY OVERRIDE | YES | YES | YES | YES | YES |
| INDIVIDUAL TIME ZONES PER DOOR/READER | YES | YES | YES | NA | NA |
| INDIVIDUAL TIME ZONES PER FLOOR | NA | NA | NA | YES | YES |
| DIAL-UP MODEM ON REMOTE ALARM | YES | YES | YES | NA | NA |
| TIME ZONE CONTROL ON KEYPAD/READER USE | YES | YES | YES | NO | NO |
| MULTI SITE CARD WITH BATCH/FACILITY CODE | YES | YES | YES | YES | YES |
| SERIAL COMMUNICATION | YES | YES | YES | YES | YES |
| DIAL-UP COMMUNICATION (OPTIONAL) | YES | YES | YES | YES | YES |
| LAN/WAN COMMUNICATION (OPTIONAL) | YES | YES | YES | YES | YES |
| ADD ON SUPPRESSOR KIT REQUIRED | NO | NO | NO | NO | NO |

KEYSCAN'S INTEGRATION AND DYNAMICS ALLOWS COMPANIES TO START WITH A SMALL SYSTEM AND GROW TO A FULL NETWORK OF SECURITY AND BUILDING MANAGEMENT.

Keyscan Inc.

901 Burns Street East, Whitby, ON Canada L1N 6A6
 Phone: +1 905.430.7226 Fax: +1 905.430.7275
 Toll Free: +1 888-KEYSCAN (539.7226)
 Web Site: www.keyscaan.ca

KEY 2008-05

Keyscan Inc. LR110441 Complies to:

| | |
|---------------|---|
| UL STD 294 | Access Control System Units |
| CSA STD C22.2 | 0.4-M1982 Bonding and Grounding of electrical equipment |
| CSA STD C22.2 | 205-M1983 Signal Equipment |
| CE | |

